



FOR IMMEDIATE RELEASE

## UPDATE ON LOCAL COVID-19 SITUATION AND VACCINATION PROGRESS

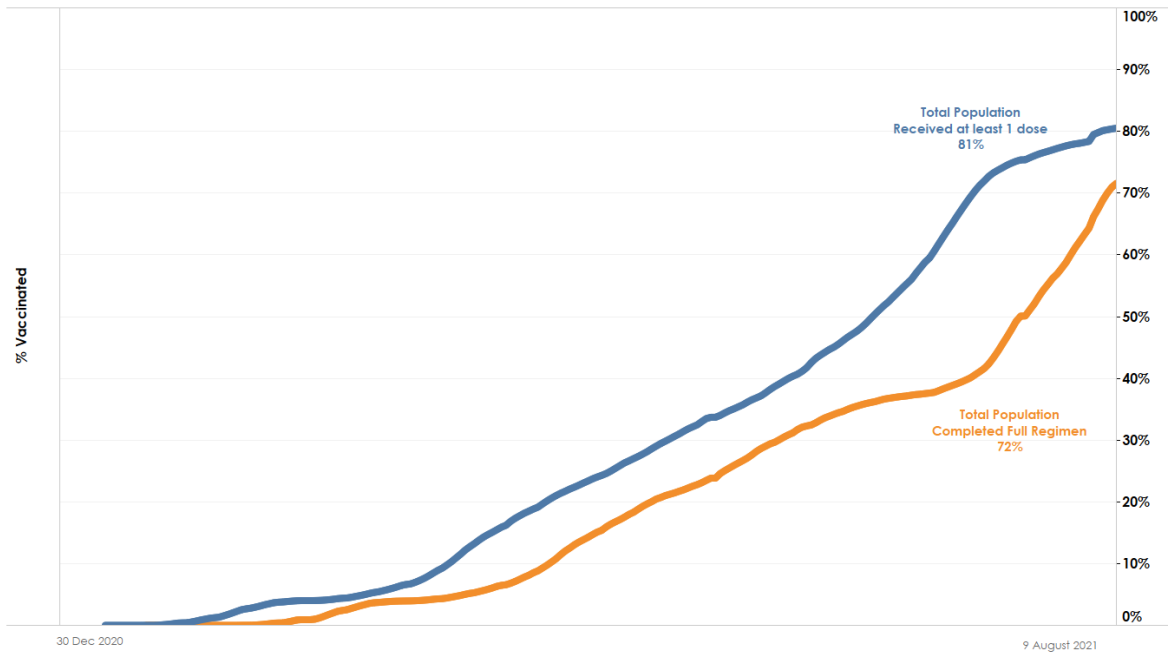
### Summary of local situation

- As of 10 August 2021, 12pm, the Ministry of Health (MOH) has confirmed and verified that there are 53 cases of locally transmitted COVID-19 infection and 1 imported case.
- 508 cases are currently warded in hospital. Most are well and under observation. There are currently 32 cases of serious illness requiring oxygen supplementation, and 11 in critical condition in the intensive care unit (ICU).
- Over the last 28 days, the percentage of unvaccinated who became severely ill or died is 8.4%, while that for the fully vaccinated is 0.8%.
- As of 9 August 2021, 72% of our population has completed their full regimen/ received two doses of COVID-19 vaccines, and 81% has received at least one dose.

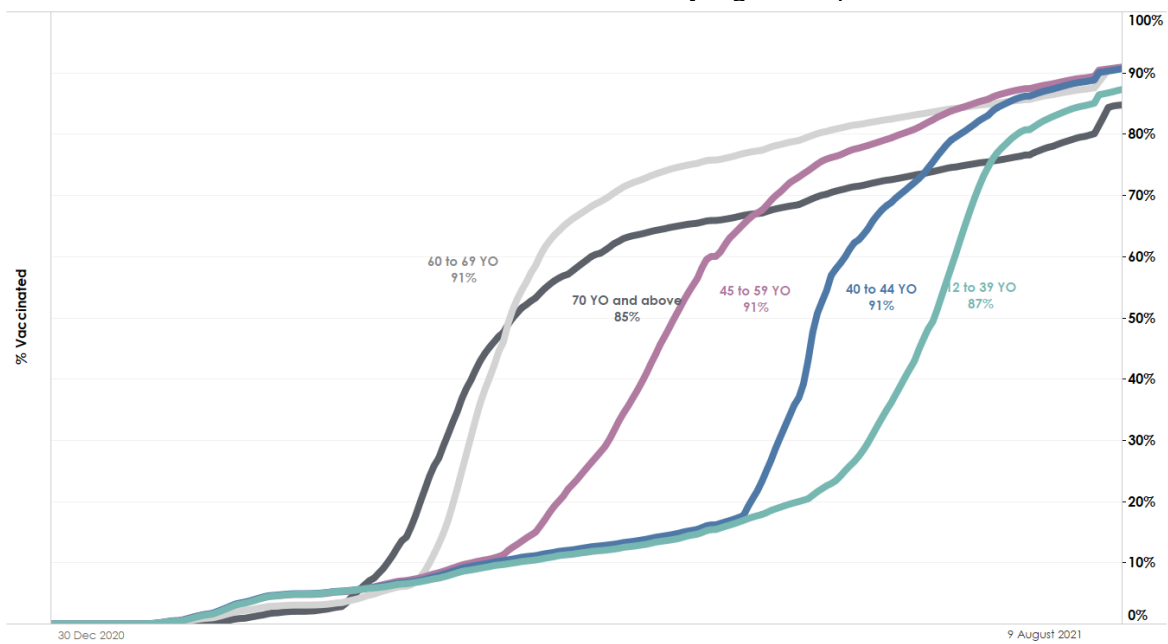
### Update on vaccination progress

As of 9 August 2021, we have administered a total of 8,145,237 doses of COVID-19 vaccines under the national vaccination programme (Pfizer-BioNTech/ Comirnaty and Moderna), covering 4,373,550 individuals, with 3,897,650 individuals having completed the full vaccination regimen. In addition, 131,186 doses of other vaccines recognised in the World Health Organization's Emergency Use Listing (WHO EUL) have been administered as of 9 August 2021, covering 80,459 individuals. In total, 72% of our population has completed their full regimen/ received two doses of COVID-19 vaccines, and 81% has received at least one dose.

**Figure 1:** Percentage of Total Population who Received At Least First Dose<sup>1</sup> and Completed Full Regimen of NVP and WHO EUL Vaccines<sup>2</sup>



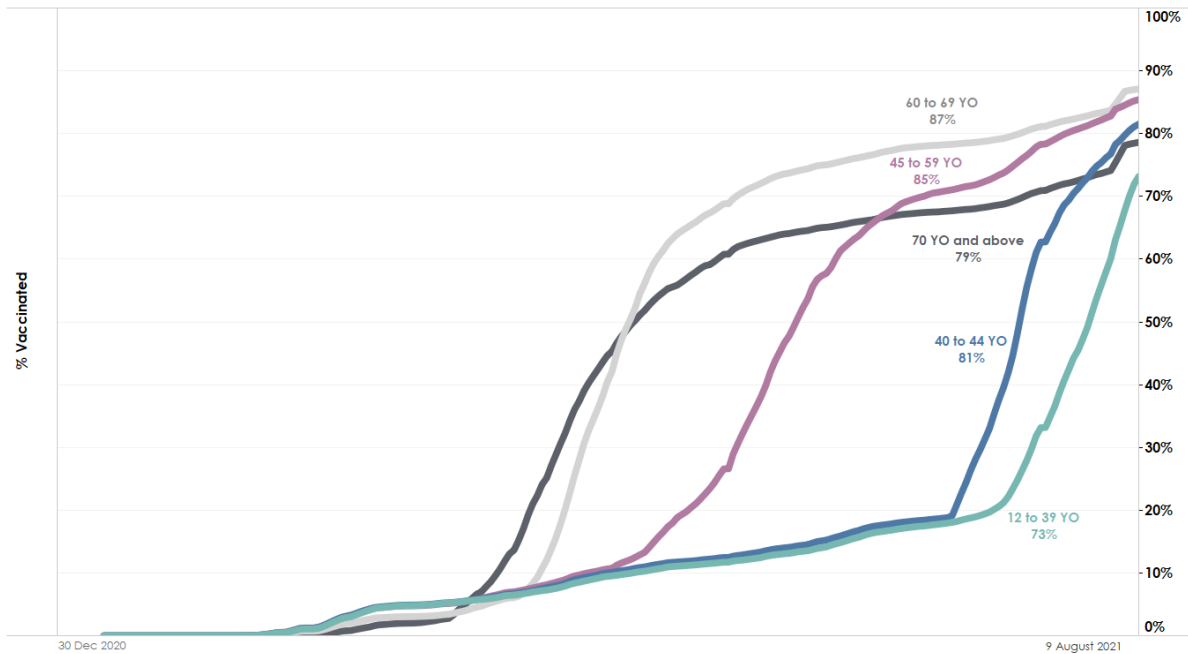
**Figure 2:** Percentage of Vaccinated Individuals who Received At Least First Dose of NVP and WHO EUL Vaccines by Age Group



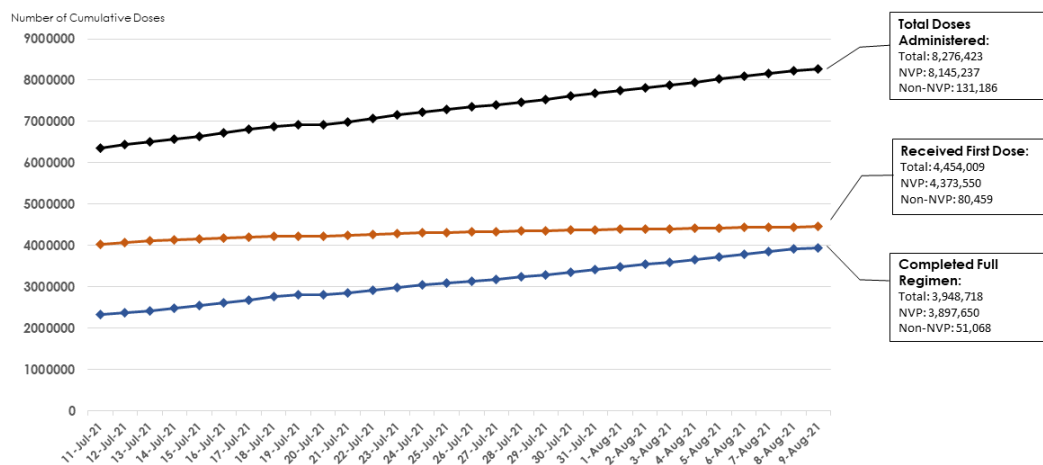
<sup>1</sup> Based on National Immunisation Registry data.

<sup>2</sup> Full regimen refers to individuals who have received both doses of the vaccine or one dose for vaccinated recovered individuals.

**Figure 3:** Percentage of Individuals who Completed Full Regimen of NVP and WHO EUL Vaccines by Age Group



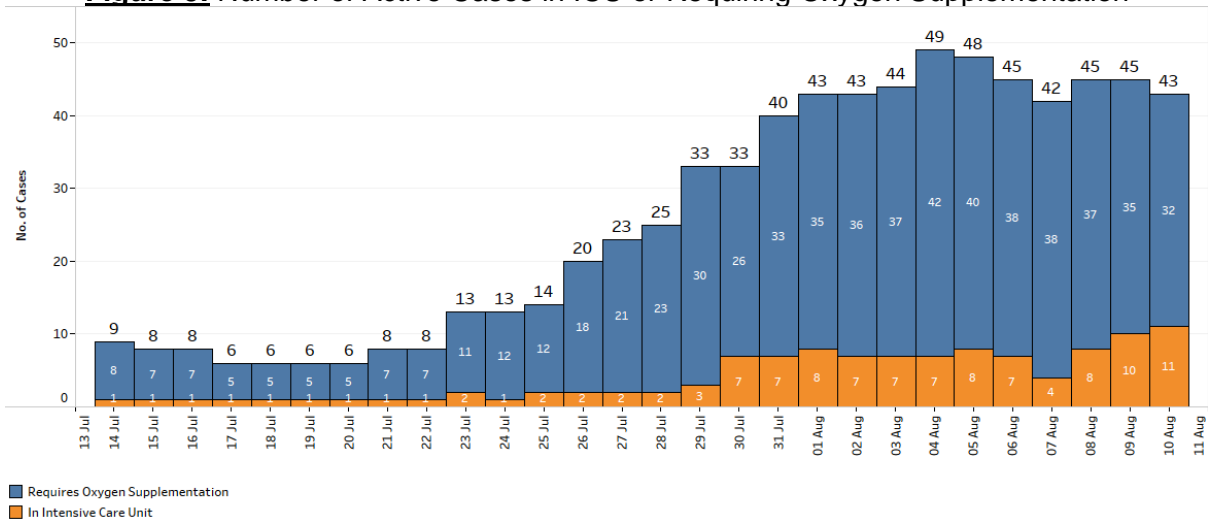
**Figure 4:** Total number of doses administered



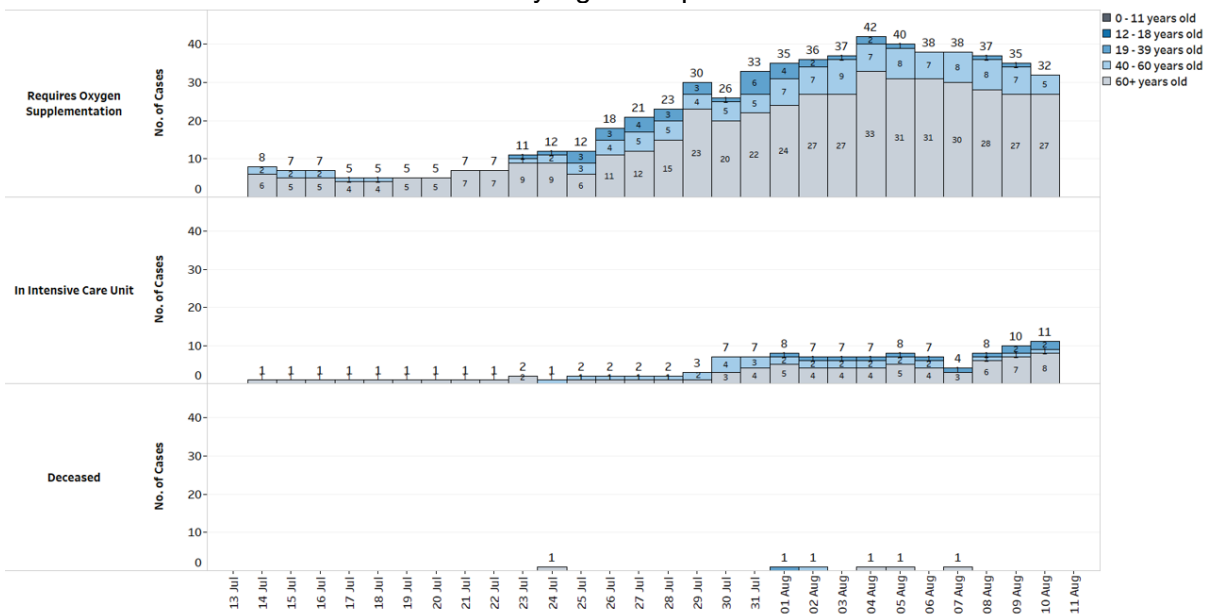
**Condition of hospitalised cases**

2. 508 cases are currently warded in hospital. There are currently 32 cases of serious illness requiring oxygen supplementation, and 11 in critical condition in the ICU. 6 amongst these 43 cases are fully vaccinated. Of those who have fallen very ill, 35 are seniors above 60 years, of whom 29 are completely unvaccinated or partially vaccinated.

**Figure 5:** Number of Active Cases in ICU or Requiring Oxygen Supplementation

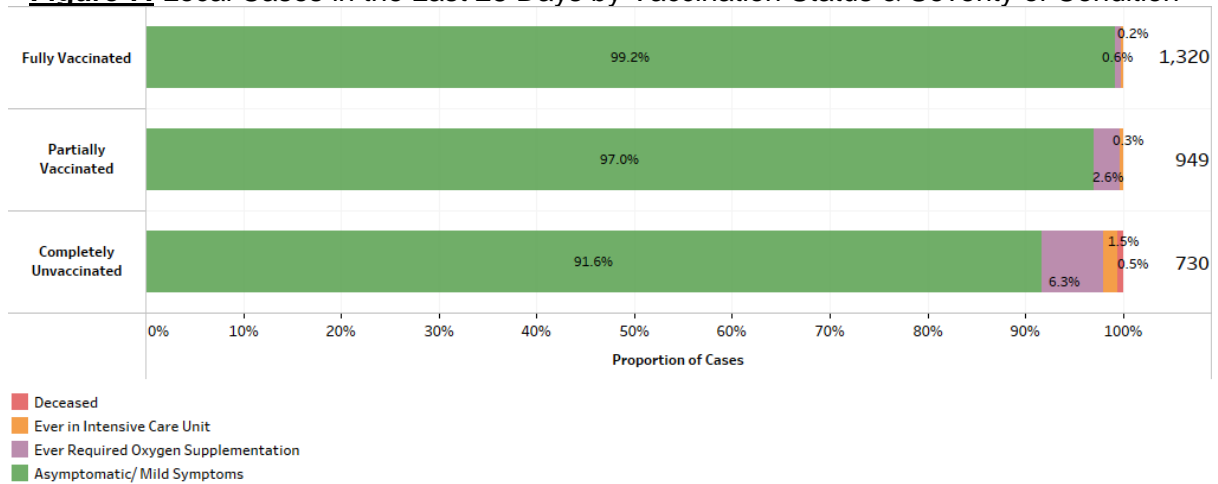


**Figure 6:** Deaths and Active Cases in ICU or Requiring Oxygen Supplementation, by Age Group

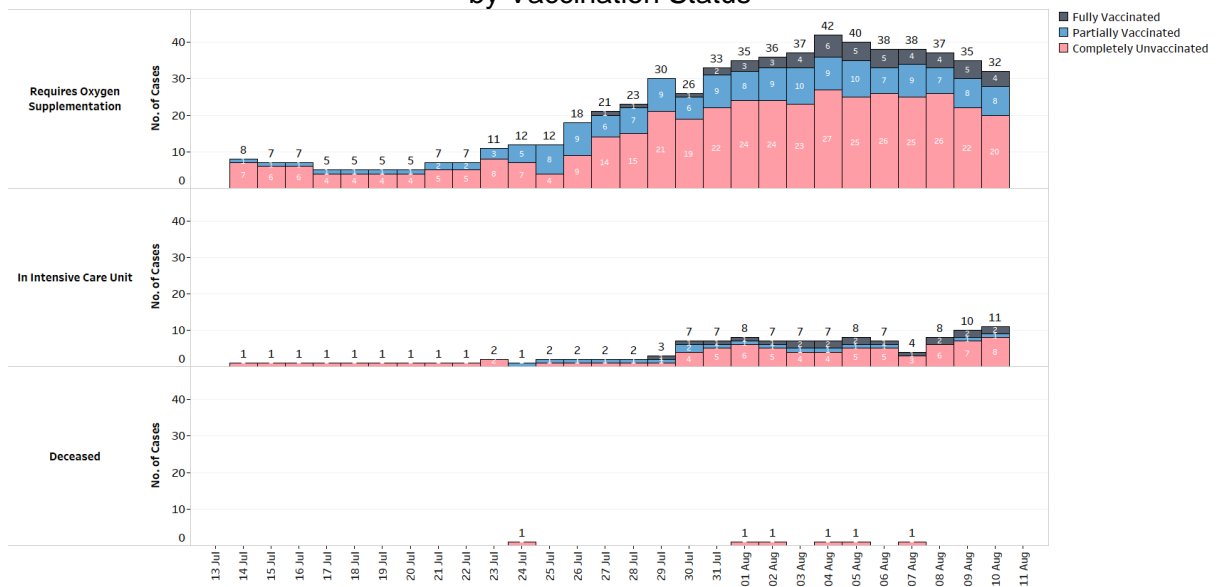


3. There is continuing evidence that almost all fully-vaccinated individuals do not suffer serious disease when infected, unless if they had underlying medical conditions that made them more susceptible. Over the last 28 days, the percentage of unvaccinated who became severely ill or died is 8.4%, while that for the fully vaccinated is 0.8%.

**Figure 7:** Local Cases in the Last 28 Days by Vaccination Status & Severity of Condition<sup>3</sup>



**Figure 8:** Deaths and Active Cases in ICU or Requiring Oxygen Supplementation, by Vaccination Status



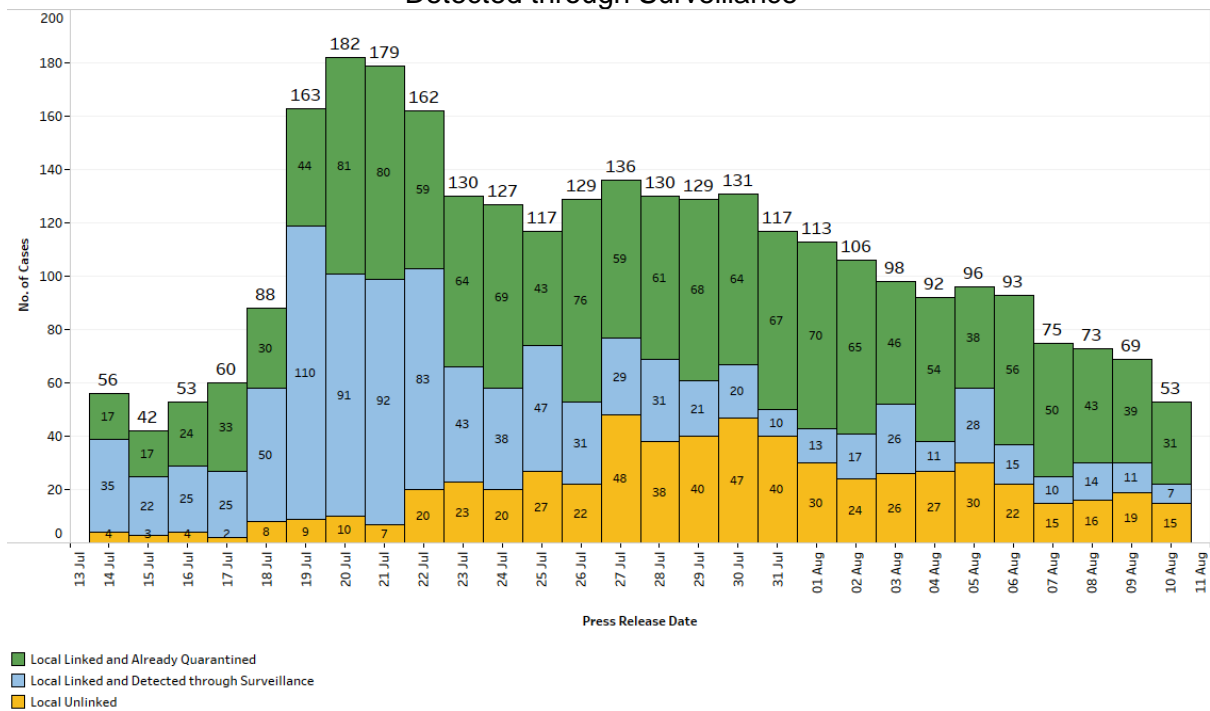
### Locally transmitted COVID-19 cases

4. There are 53 cases of locally transmitted COVID-19 infection today. 31 are linked to previous cases, and have already been placed on quarantine. 7 are linked to previous cases and were detected through surveillance. 15 are currently unlinked.

5. There is 1 imported case, who was detected and isolated upon arrival in Singapore. In total, there are 54 new cases of COVID-19 infection in Singapore today.

<sup>3</sup> Fully vaccinated - more than 14 days after completing vaccination regimen (both doses of the vaccine or one dose for recovered individuals). Partially vaccinated – received 1 dose of 2-dose vaccine or COVID-positive within 14 days of completing vaccination regimen.

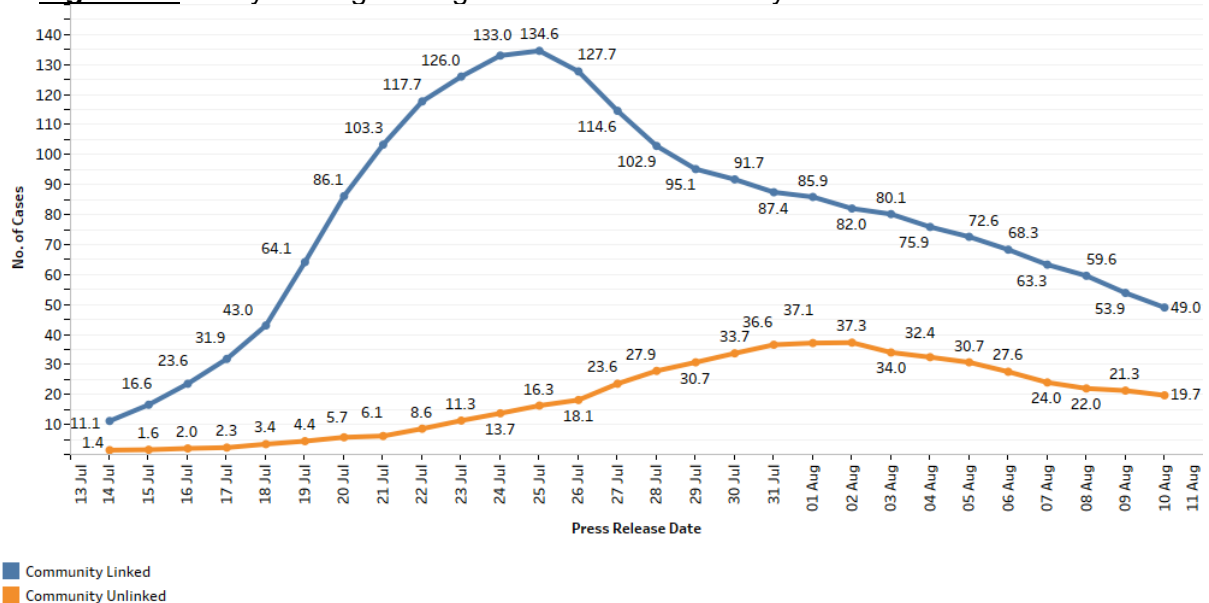
**Figure 9:** Number of Local Unlinked Cases and Linked Cases by Already Quarantined/ Detected through Surveillance <sup>4</sup>



**Summary of trends for local cases**

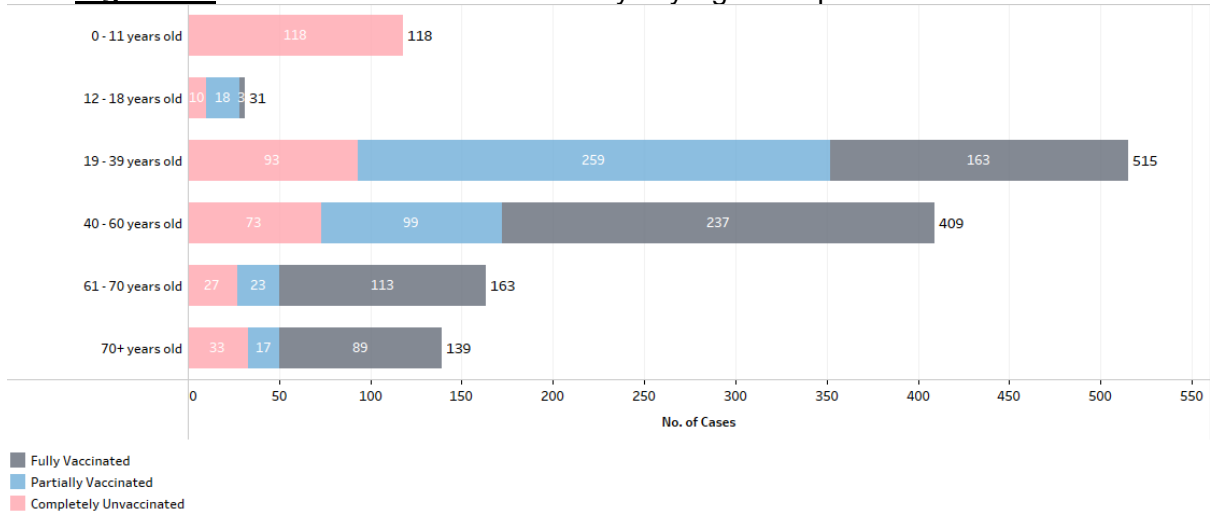
6. Overall, the number of new cases in the community has decreased from 799 cases in the week before to 481 cases in the past week. The number of unlinked cases in the community has also decreased from 238 cases in the week before to 138 cases in the past week. The 7-day moving average number of all linked community cases and all unlinked community cases are 49.0 and 19.7 respectively.

**Figure 10:** 7 Day Moving Average Number of Community Unlinked and Linked Cases <sup>4</sup>



<sup>4</sup> Incorporates re-classifications of earlier reported cases.

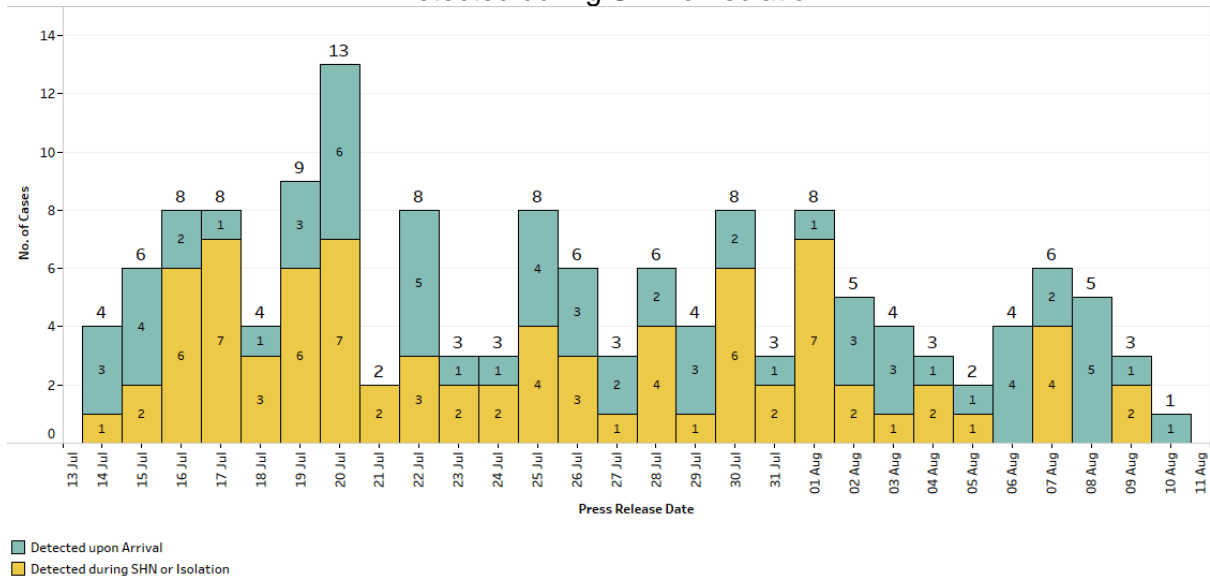
**Figure 11:** Local Cases in the Last 14 Days by Age Group and Vaccination Status



### Summary of trends for imported cases

7. There is 1 imported case today who was detected upon arrival in Singapore.

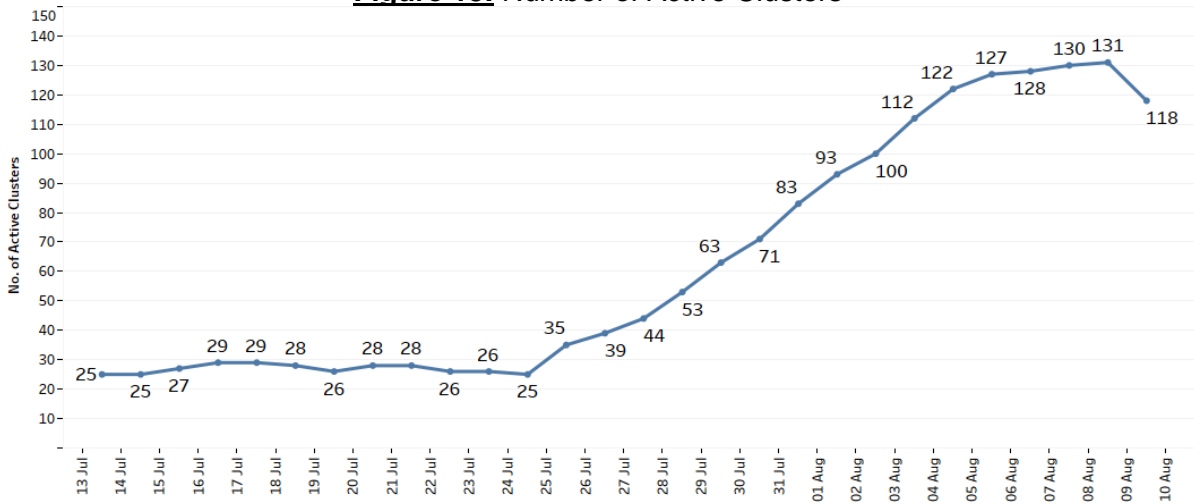
**Figure 12:** Number of Imported Cases by Detected Upon Arrival/  
Detected during SHN or Isolation



### Active clusters under monitoring

8. There are currently 118 active clusters, ranging between 3 and 1,149 infections.

**Figure 13: Number of Active Clusters**



**Figure 14: List of Active Clusters**

Cluster	New Cases	Total <sup>5</sup>
NKF Dialysis Centre (Sakyadhita)	1	4
Jurong Fishery Port/ Hong Lim Market & Food Centre*	1	1,149
Case 67343	1	40
Samy's Curry Restaurant	1	61
Punggol Primary School	0	17
Case 66567	5	30
Marina Bay Sands Casino	2	65
Elsie's Kitchen	1	6
JEM	1	6
CHIJ Katong Convent	2	11
Kian Hiap Construction	1	15
Case 66449	2	21
Case 67704	0	4
Chee Song Frozen Foods	0	7
Westlite Juniper Dormitory	0	34
Case 67651	0	8
Case 67283	0	12
Case 66244	0	8
Case 67425	0	5
Home's Favourite Pte Ltd	0	16
Case 67738	0	3
Sin Ming 23 Coffee Shop	0	7
North Bridge Road Market & Food Centre	0	13
Nimble/Knead	0	7
Case 66542	0	4

<sup>5</sup> Includes new cases added today.



Cluster	New Cases	Total <sup>5</sup>
Case 67436	0	7
Case 65882	0	5
Case 67582	0	9
Changi General Hospital	0	4
Case 66764	0	4
Case 66804	0	6
Case 66844	0	9
Case 67278	0	5
Case 67276	0	7
Case 67476	0	6
Case 66998	0	4
Case 65687	0	3
Case 66996	0	3
Case 67143	0	3
Case 67161	0	3
Case 67388	0	3
Case 67471	0	5
Case 67534	0	4
Westlite Mandai Dormitory	0	10
Case 67041	0	6
Case 67051	0	5
Zuellig Pharma	0	8
Case 66707	0	5
Case 66766	0	3
Case 66922	0	3
Case 67014	0	3
Case 67069	0	3
Case 67236	0	3
Case 66774	0	7
Case 67048	0	8
Case 65999	0	5
Institution S2 Selarang Park Complex	0	8
KTV lounges/clubs	0	252
Case 65972	0	4
Case 66940	0	4
Case 67017	0	3
Case 67078	0	3
Case 67227	0	3
Seng Leong Steel (Ent) Pte Ltd	0	5
Case 66754	0	5
Case 67085	0	4
Case 67204	0	3

Cluster	New Cases	Total <sup>5</sup>
Case 67297	0	3
Case 65952	0	5
Case 66929	0	5
Case 66868	0	3
Case 66888	0	3
Case 66913	0	3
Case 67004	0	4
Yishun Community Hospital	0	4
Case 66391	0	3
Case 66713	0	3
Case 66784	0	4
Case 66807	0	5
Case 66851	0	5
Case 65751	0	8
Case 66623	0	3
Case 65793	0	3
Case 66240	0	4
Case 66790	0	3
Case 66995	0	3
Case 66473	0	4
Case 66464	0	7
Case 66370	0	4
Case 64697	0	76
Case 66293	0	3
Case 66142	0	3
Case 66450	0	3
Case 66458	0	4
Case 66482	0	4
Case 66915	0	6
Case 66538	0	4
Case 66517	0	3
Case 66487	0	4
Case 66468	0	3
Case 66462	0	3
Case 66215	0	4
Case 66106	0	3
Case 66377	0	5
Case 66435	0	6
Case 65893	0	6
Case 66413	0	4
PSC Express Pte Ltd	0	5
Case 66259	0	4

Cluster	New Cases	Total <sup>5</sup>
Case 65360	0	10
Case 65695	0	3
Apex Medical Centre (Jurong)	0	3
Case 65979	0	3
Case 65791	0	4
Case 65342	0	3
Case 64850	0	3
Khoi Grill & Hotpot	0	8
Case 64642	0	3

\* Yuhua Market & Hawker Centre and Taman Jurong Market are currently linked to this cluster.

9. Please refer to MOH's daily Situation Report ([www.moh.gov.sg/covid-19/situation-report](http://www.moh.gov.sg/covid-19/situation-report)) for details.

**MINISTRY OF HEALTH**  
**10 AUGUST 2021**

---

For media queries, please contact:

**Yap Wei Qiang (Mr)**  
Senior Manager  
Corporate Communications Division  
Ministry of Health  
Contact: 6325-1745 / 9450-1147  
Email: YAP\_Wei\_Qiang@moh.gov.sg